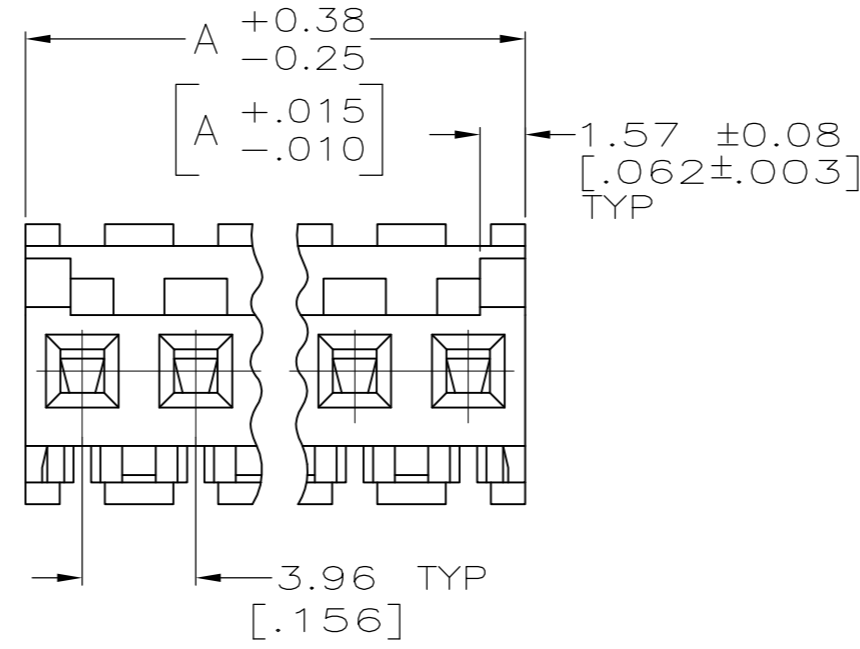
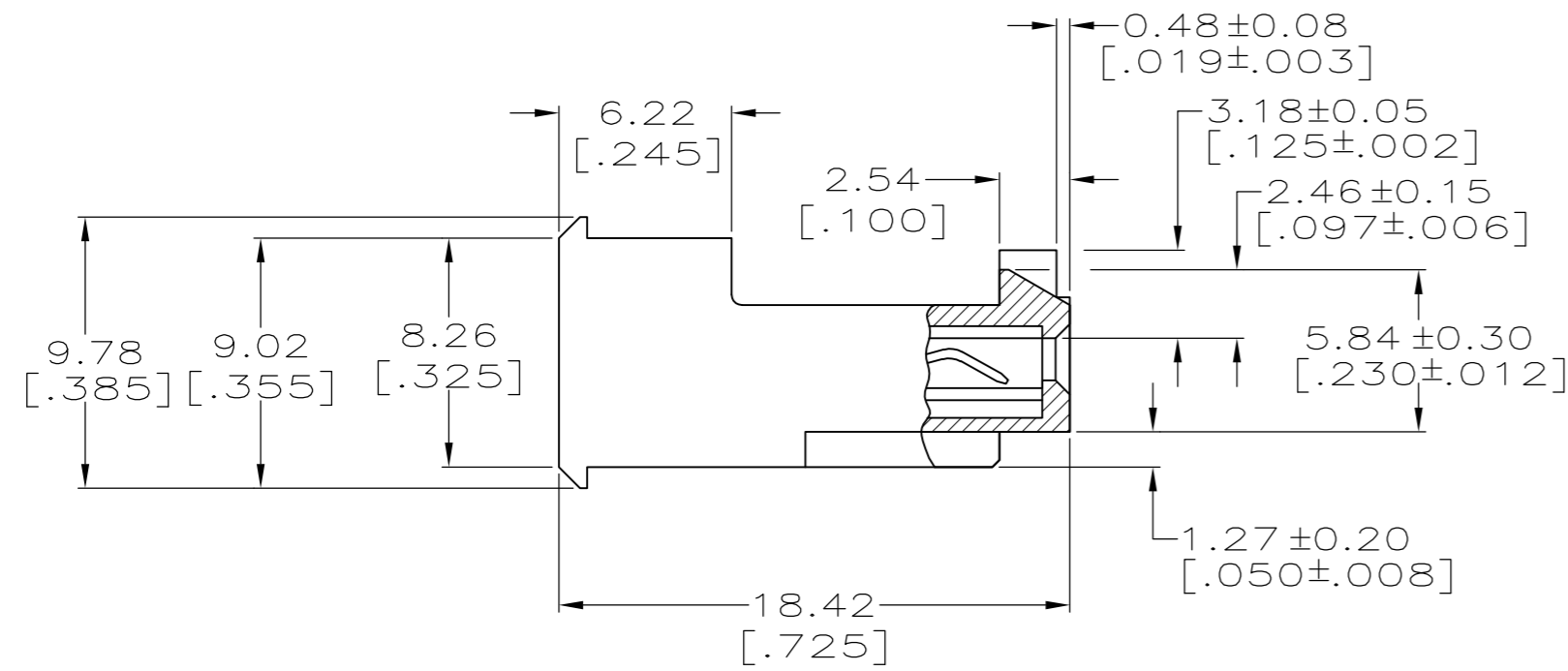
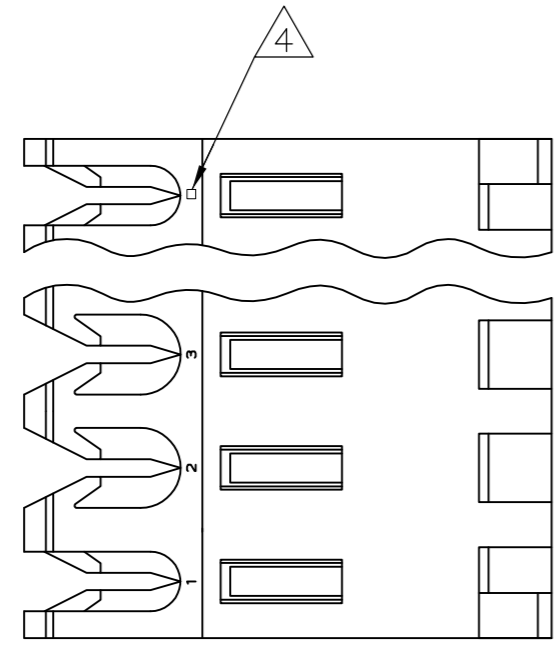


THIS DRAWING IS UNPUBLISHED. RELEASED FOR PUBLICATION
 © COPYRIGHT BY TYCO ELECTRONICS CORPORATION. ALL RIGHTS RESERVED.

LOC	DIST	REVISIONS					
CM	00	P	LTR	DESCRIPTION	DATE	DWN	APVD
		H		ECO-07-012870	14JUN07	KW	DB



1 MATERIAL: CONNECTOR - NYLON UL94V-2 (ORANGE).
 CONTACTS - 0.00076 [.000030] GOLD IN CONTACT AREA WITH BRIGHT TIN-LEAD FOR -2 THRU -28, MATTE WHISKER MITIGATED TIN FOR 3-644718-2 THRU 4-644718-4 OVER NICKEL UNDERPLATE.

2. CONTACTS ACCEPT 18 AWG WIRE WITH 2.41 [.095] MAX INSULATION DIAMETER.

3. CONTACTS MUST ACCEPT 1.14 ± 0.03 [.045 ± .001] POST AND REMAIN LOCKED IN POSITION.

4 IDENTIFICATION NUMBER FOR LAST CIRCUIT MAY NOT APPEAR ON ALL ASSEMBLIES.

5. DIMENSIONS IN BRACKETS ARE IN INCHES.

6. HOUSING FEATURES ARE: FEED-THRU WITH LOCKING RAMP AND POLARIZING TAB.

YES/NO	DESCRIPTION	DATE	REV
YES	55.47[2.184]	14	4-644718-4
YES	51.51[2.028]	13	4-644718-3
YES	47.55[1.872]	12	4-644718-2
YES	43.59[1.716]	11	4-644718-1
YES	39.62[1.560]	10	4-644718-0
YES	35.66[1.404]	9	3-644718-9
YES	31.70[1.248]	8	3-644718-8
YES	27.74[1.092]	7	3-644718-7
YES	23.77[.936]	6	3-644718-6
YES	19.81[.780]	5	3-644718-5
YES	15.85[.624]	4	3-644718-4
YES	11.89[.468]	3	3-644718-3
YES	7.92[.312]	2	3-644718-2
NO	55.47[2.184]	14	1-644718-4
NO	51.51[2.028]	13	1-644718-3
NO	47.55[1.872]	12	1-644718-2
NO	43.59[1.716]	11	1-644718-1
NO	39.62[1.560]	10	1-644718-0
NO	35.66[1.404]	9	644718-9
NO	31.70[1.248]	8	644718-8
NO	27.74[1.092]	7	644718-7
NO	23.77[.936]	6	644718-6
NO	19.81[.780]	5	644718-5
NO	15.85[.624]	4	644718-4
NO	11.89[.468]	3	644718-3
NO	7.92[.312]	2	644718-2
LEADFREE	DIM A	NO. OF CIRCUITS	PART NO.

METRIC

THIS DRAWING IS A CONTROLLED DOCUMENT.		DWN K. WHITAKER 15MAR2004	Tyco Electronics Corporation Harrisburg, Pa 17105-3608	
DIMENSIONS: mm [INCHES]		CHK D. BOSSI 15-MAR-04	NAME MTA-156 CONNECTOR ASSEMBLY, 18 AWG, STANDARD	
TOLERANCES UNLESS OTHERWISE SPECIFIED:		APVD D. BOSSI 15-MAR-04	SIZE A2	
0 PLC ± -	1 PLC ± -	PRODUCT SPEC 108-1051	CAGE CODE 00779	DRAWING NO C=644718
2 PLC ± 0.13 [.005]	3 PLC ± -	APPLICATION SPEC 114-1020	RESTRICTED TO	
4 PLC ± -	ANGLES ± 0°30'	WEIGHT -	SCALE 4:1	SHEET 1 OF 1
MATERIAL 1	FINISH 1	CUSTOMER DRAWING	REV H	